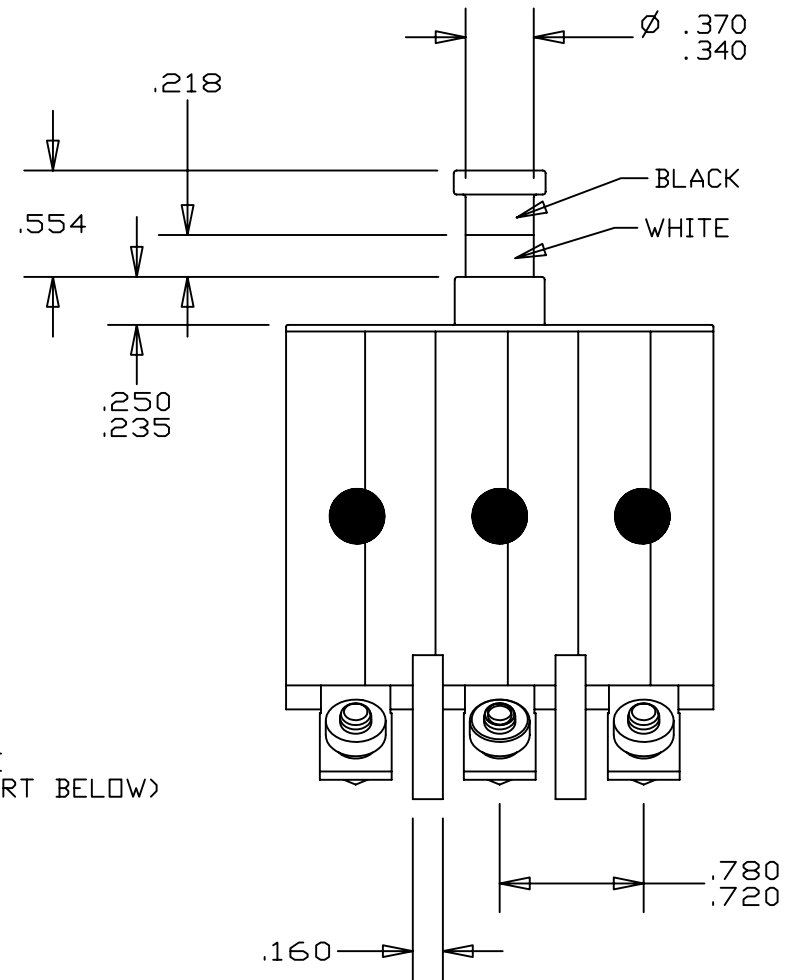
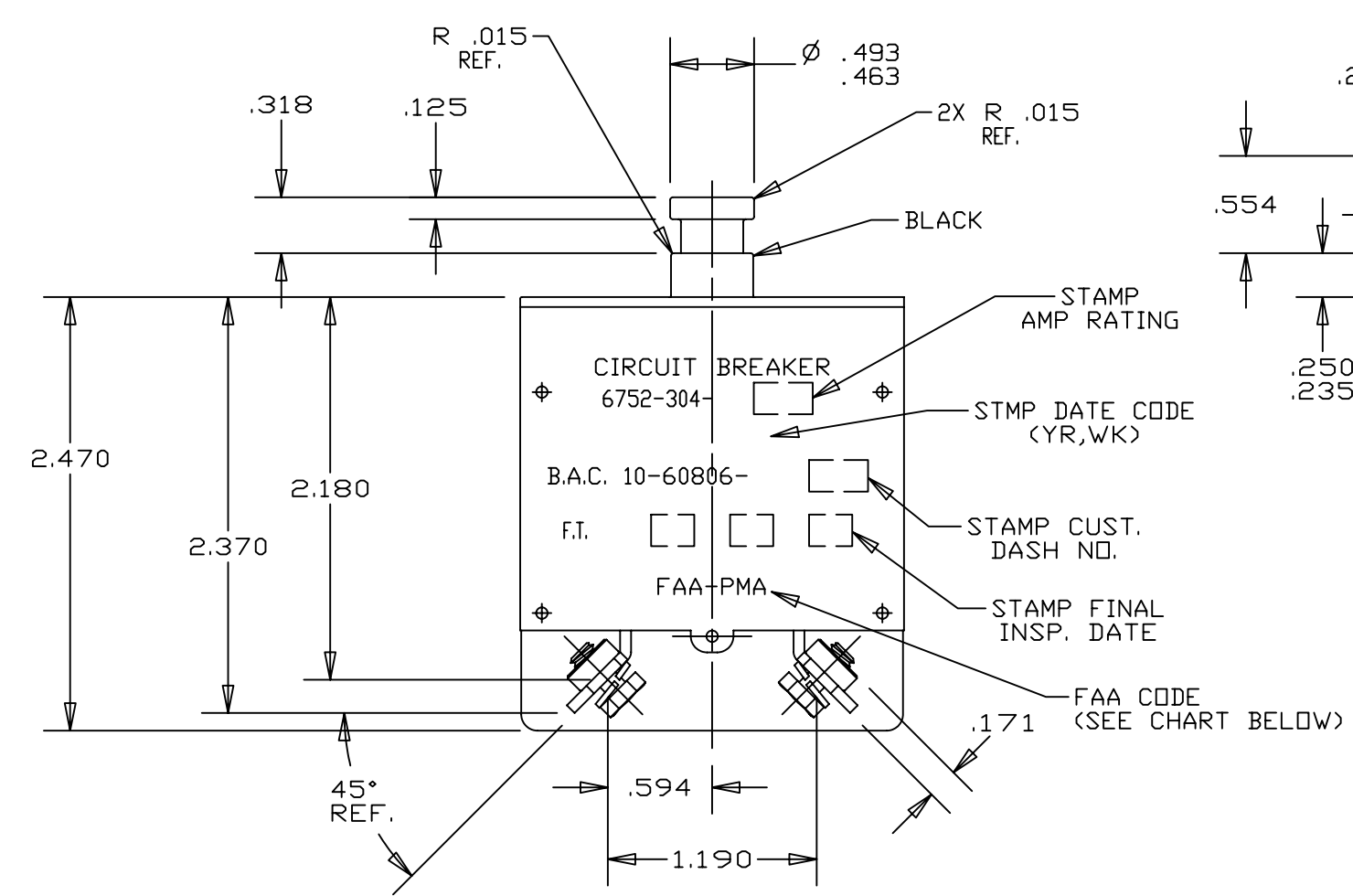
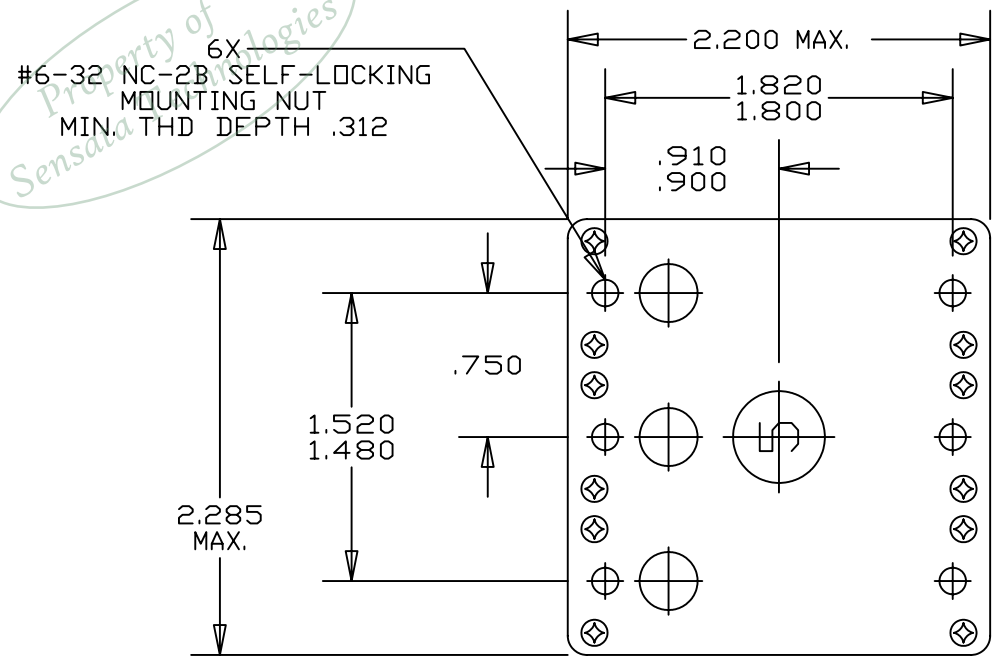
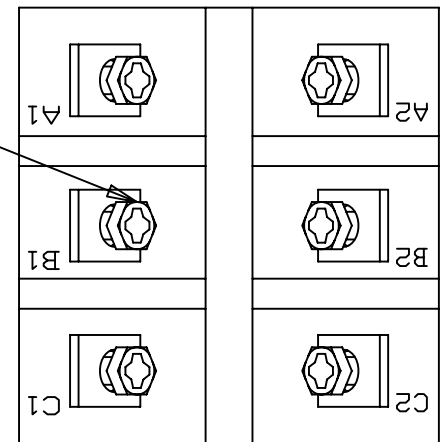


ZONE	REV.	REVISION DESCRIPTION	ECN NO.	DATE
	Y	FAA CODE FOR 6752-304-71/2 WAS "YES"; GML	ECN0032867	20-DEC-2006



6X  
#8-32 NC-2A X 5/16 LONG  
HEX HEAD PHILLIPS RECESS  
SCREW AND CAPTIVE SPLIT  
LOCKWASHER .031 THICK



BOTTOM VIEW SHOWING  
PHASE IDENTIFICATION  
PART NO. 6752-304-5 SHOWN

6752-304-50	50	50	YES
6752-304-40	40	40	NO
6752-304-35	35	35	YES
6752-304-25	25	25	YES
6752-304-20	20	20	YES
6752-304-15	15	15	YES
6752-304-10	10	10	YES
6752-304-7 1/2	7 1/2	7	NO
6752-304-5	5	5	YES
6752-304-2 1/2	2 1/2	SEE NOTE #3	NO
CPD PART NO.	CPD DASH NO.	CUSTOMER DASH NO.	FAA CODE

CALIBRATION:

SINGLE PHASE LOAD:

AMBIENT TEMP.	200% TIME* SEC.	400% TIME SEC.	1000% TIME SEC.
-54°C	15 - 65	2.3 - 10	.33 - 1.4
25°C	15 - 65	2.3 - 10	.33 - 1.4
71°C	15 - 65	2.3 - 10	.33 - 1.4

THREE PHASE BALANCED LOAD:

AMBIENT TEMP.	200% TIME* SEC.	400% TIME SEC.	1000% TIME SEC.
-54°C	15 - 180	2.3 - 11	.33 - 1.4
25°C	12 - 65	2.3 - 10	.33 - 1.4
71°C	12 - 65	2.0 - 10	.30 - 1.4

ULTIMATE TRIP:

AMBIENT TEMP.	HOLD	TRIP
-54°C	105%	170%
25°C	105%	140%
71°C	90%	140%

AMBIENT TEMP.	LOAD IN ONE PHASE	LOAD IN OTHER TWO PHASES	
-54°C	170%	80%	MUST TRIP
25°C	145%	100%	MUST TRIP
25°C	160%	0%	MUST TRIP

RUPTURE:  
ALL RATINGS: 120 VAC LINE TO NEUTRAL 400 CYCLES 6000 AMPS  
205 VAC LINE TO LINE 400 CYCLES 4200 AMPS  
120 VAC THREE-PHASE 400 CYCLES 2800 AMPS

ENDURANCE: 120 VAC, 400 C.P.S.  
MECHANICAL 10,000 CYCLES  
RESISTIVE LOAD 5,000 CYCLES  
INDUCTIVE LOAD 5,000 CYCLES

TOTAL 20,000 CYCLES  
WEIGHT: .65 LB

MECHANICAL SHOCK PER MIL-C-5809C  
SAND AND DUST PER MIL-E-5272B  
CORROSION PER MIL-C-5809C  
HUMIDITY PER MIL-C-5809C  
EXPLOSION PROOF PER MIL-E-5272B

FOR OTHER CHARACTERISTICS REFER TO SPECIFICATION 12552-2  
THIS DRAWING TAKES PRECEDENCE OVER 12552-2

OPERATING FORCE: OPENING 6 - 14 LBS.  
CLOSING 14 - 23 LBS.

\*APPLIES TO ALL RATINGS EXCEPT 2.5 AMP, SINGLE PHASE & THREE PHASE  
200% TIME FOR 2.5 AMP RATING AT -54°C TO 71°C IS 10 TO 65 SEC.

- NOTES:
- QC FINAL + IN PROCESS STAMP REQUIRED ON LETTERED SIDE OF BREAKER.
  - WHEN THE BREAKER BUTTON IS RESET AFTER TRIPPING ON AN OVERLOAD, CONTINUITY WILL BE ESTABLISHED ON ALL THREE PHASES. IT WILL NOT BE POSSIBLE TO MAINTAIN THE BREAKER IN A SINGLE PHASE OR TWO PHASE CONDITION.
  - DELETE B.A.C. NO. ON 2 1/2 AMPS.

FOR REFERENCE ONLY, CHECK LATEST REVISION BEFORE USE. PARTS MADE TO THIS PRINT MUST CONFORM TO E9898 REV. E		<p>529 PLEASANT STREET P.O. BOX 2964 ATTLEBORO, MA 02703</p>
DRAWN CHAS. FLEURANT DATE 7-APR-1997	NEITHER THIS PRINT NOR THE INFORMATION CONTAINED HEREON IS TO BE USED AGAINST THE INTERESTS OF SENSATA TECHNOLOGIES, INC. OR AGAINST THE INTERESTS OF ANY OF ITS AFFILIATED COMPANIES OR WHOLLY OWNED SUBSIDIARIES.	
ENGINEER K.B. GASSER DATE 7-APR-1997	UNLESS OTHERWISE SPECIFIED DIMENSIONS ARE IN INCHES TOLERANCES DECIMALS ANGLES	TITLE 6752-304 TYPE 3 - PHASE PUSH PULL-TRIP FREE CIRCUIT BREAKER ENVELOPE DRAWING
APPROVED D.C. KARAVOLIS DATE 7-APR-1997	X.XXX ± .030	DWG NO. <b>6752-304</b>
APPROVED DATE	THIRD ANGLE PROJECTION DO NOT SCALE DRAWING	REV. Y
DEVICE:6752 PROJECT: 755		SCALE 1:1 AUTOCAD SHEET 1 OF 1