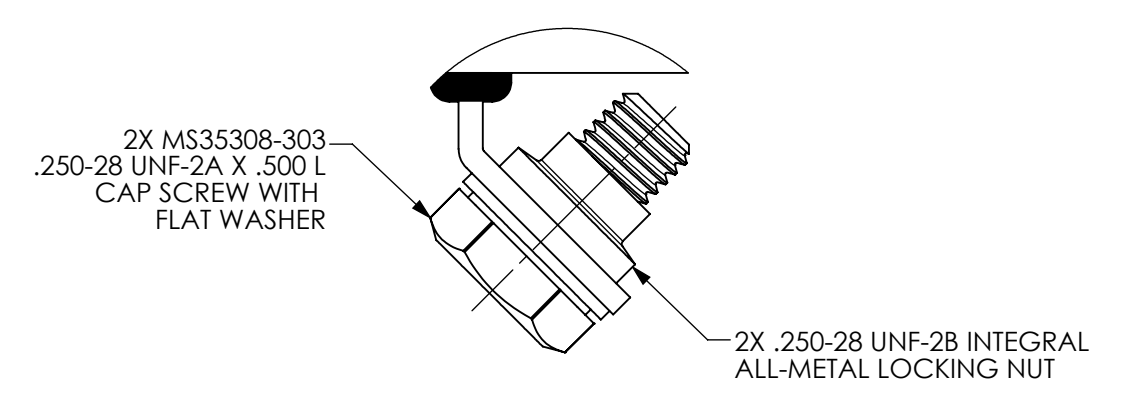
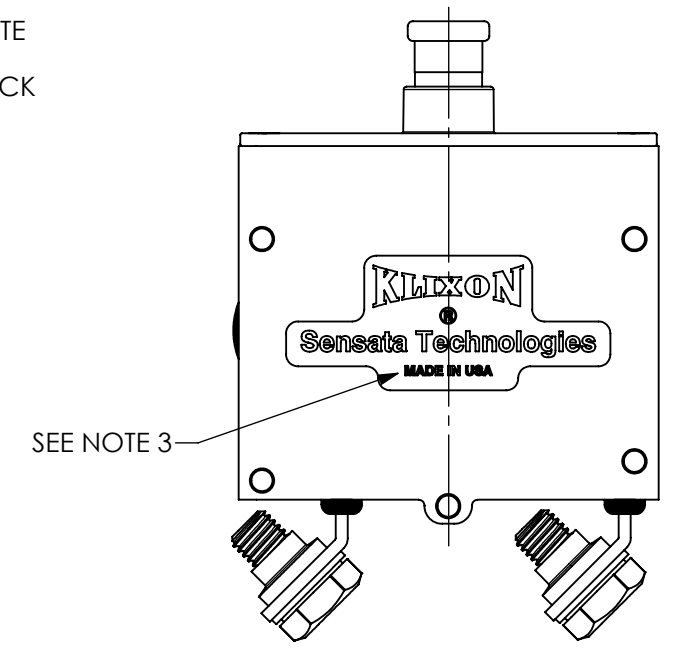
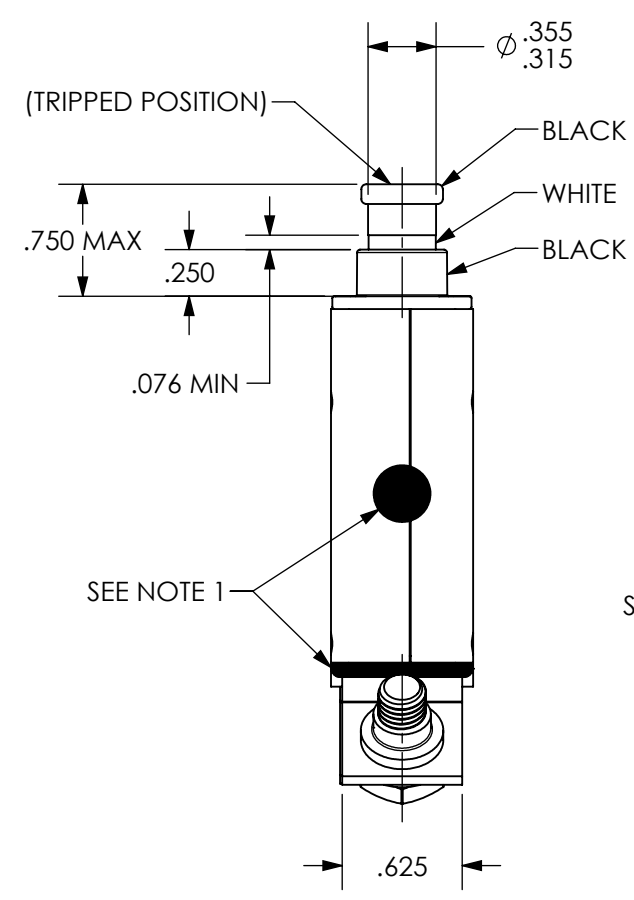
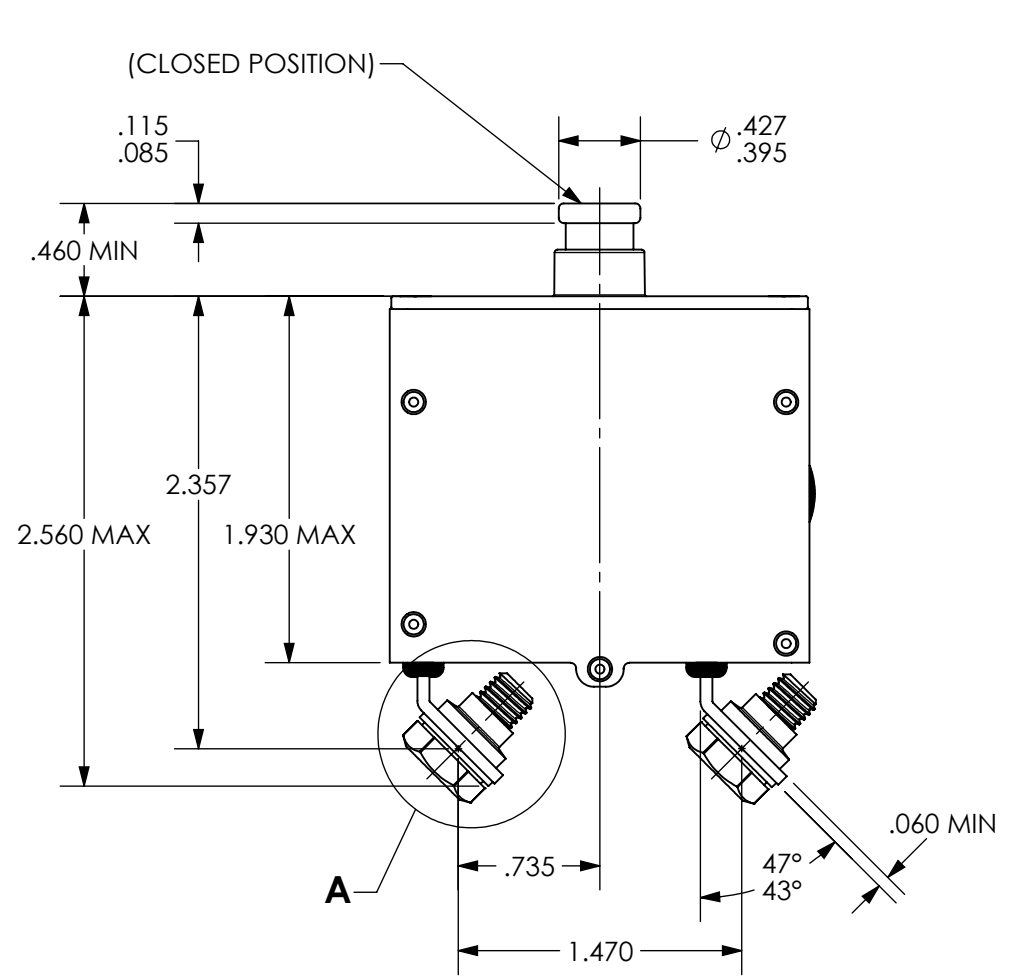
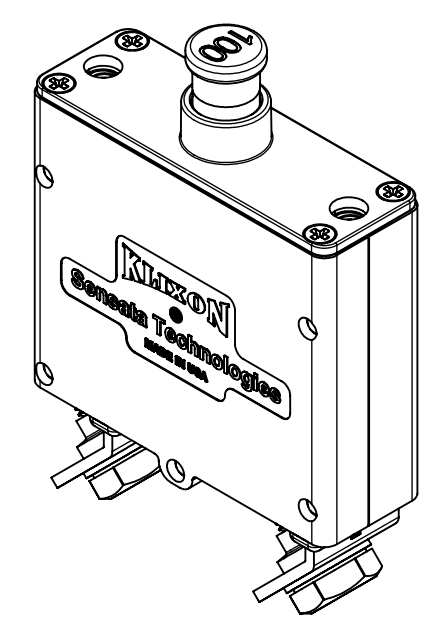
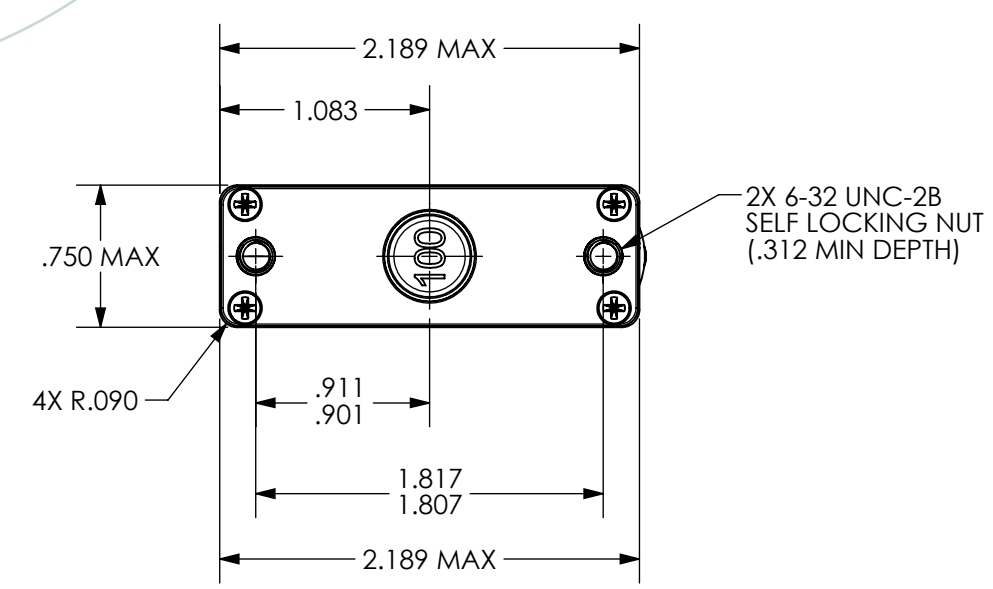


Property of
Sensata Technologies



DETAIL A
SCALE 2 : 1

6752-102-100	MS25361-100V	100
6752-102-90	MS25361-90V	90
6752-102-80	MS25361-80V	80
6752-102-75	MS25361-75V	75
6752-102-70	MS25361-70V	70
6752-102-60	MS25361-60V	60
6752-102-50	MS25361-50V	50
PART NO.	MS PART NO.	AMP RATING

ZONE	REV.	REVISION DESCRIPTION	ECN NO.	DATE
A2	F	IN PART NO. TABLE, REMOVED AN "L" AT THE END OF ALL "MS PART NO." ITEMS; GML	ECO-283820	18-FEB-2019

**PERFORMANCE CHARACTERISTICS
TESTED TO AND MEETS REQUIREMENTS OF MIL-C-5809**

1	CALIBRATION	50-100 AMPS			
			AMBIENT TEMPERATURE	MINIMUM ULTIMATE TRIP	MAXIMUM ULTIMATE TRIP
			25°C (77°F)	105%	138%
			-40°C (-40°F)	125%	165%
			70°C (160°F)	70%	125%
				200% TIME	400% TIME
				15-65 SEC.	2-10 SEC.
					600% TRIP
					1-4 SEC.
2	INTERRUPTURE CAPACITY	120 VAC, 400 Hz 28 VDC		3500 AMPS 6000 AMPS	
3	ENDURANCE	MECHANICAL (NO LOAD)		5,000 CYCLES	
		AC 120 V, 400 Hz			
		RESISTIVE LOAD		5,000 CYCLES	
		INDUCTIVE LOAD		5,000 CYCLES	
		DC 28 V			
		RESISTIVE LOAD		5,000 CYCLES	
		INDUCTIVE LOAD		2,500 CYCLES	
4	OVERLOAD CYCLING	100 CYCLES AT 200% RATED LOAD			
5	VOLTAGE DROP	50-100 AMPS: 0.3 V MAX.			
6	WEIGHT	0.25 LBS. (113.6g) MAX.			
7	OPERATING FORCE	PULLOUT: 12 LBS. MAX. RESET: 16 LBS. MAX.			
8	DIELECTRIC STRENGTH	1500 VAC, RMS.			
9	INSULATION RESISTANCE	100 MEGOHMS AT 500 VDC.			
10	MAX. OPERATING ALTITUDE	70,000 FEET			
11	VIBRATION	10g, LOADED 10-2000 Hz 15g'S UNLOADED 10-2000 Hz			
12	SHOCK	30g, 11 MSEC DURATION			
13	ACCELERATION	10g			
14	SAND AND DUST	12 HOURS			
15	CORROSION	SALT SPRAY 50 HOURS			
16	MOISTURE RESISTANCE	240 HOURS			
17	EXPLOSION PROOF	WHILE INTERRUPTING RUPTURE CURRENTS			

NOTES:

- EPOXY SURFACES ARE NON-DIMENSIONED. ENVELOPE DIMENSIONS DO NOT APPLY TO PROJECTED EPOXY SURFACES.
- TERMINAL HARDWARE MUST BE PACKED SEPERATELY BECAUSE OF LOCKING NUTS.
- COUNTRY OF ORIGIN IS SHOWN FOR ILLUSTRATIONAL PURPOSES ONLY. COUNTRY OF ORIGIN TO BE IDENTIFIED AS REQUIRED

FOR REFERENCE ONLY, CHECK LATEST REVISION BEFORE USE. PARTS MADE TO THIS PRINT MUST CONFORM TO E9898 REV. E.		529 PLEASANT STREET P.O. BOX 2964 ATTLEBORO, MA 02703	
DRAWN CHAS. FLEURANT DATE 06-DEC-1994 ENGINEER K.B. GASSER DATE 06-DEC-1994 APPROVED D.R.PETRIE DATE 06-DEC-1994 APPROVED PETE BERG DATE 06-DEC-1994	SENSATA TECHNOLOGIES PROPRIETARY AND CONFIDENTIAL. NEITHER THIS PRINT NOR THE INFORMATION CONTAINED HEREON IS TO BE USED AGAINST THE INTERESTS OF SENSATA TECHNOLOGIES OR AGAINST THE INTERESTS OF ANY OF ITS AFFILIATED COMPANIES OR WHOLLY OWNED SUBSIDIARIES. INTERPRET DIMENSIONING AND TOLERANCING PER ASME Y14.5-2009. UNLESS OTHERWISE SPECIFIED DIMENSIONS ARE IN INCHES. TOLERANCES DECIMALS X.XXX ±.031 ANGLES	TITLE 6752-102 TYPE PUSH PULL CIRCUIT BREAKER ENVELOPE DRAWING	SIZE C
DO NOT SCALE DRAWING THIRD ANGLE PROJECTION		DWG NO. 6752-102	REV. F
SCALE 1:1	SOLIDWORKS	SHEET 1 OF 1	